

The Courses & Dist
up the Creek

S 57 W 58

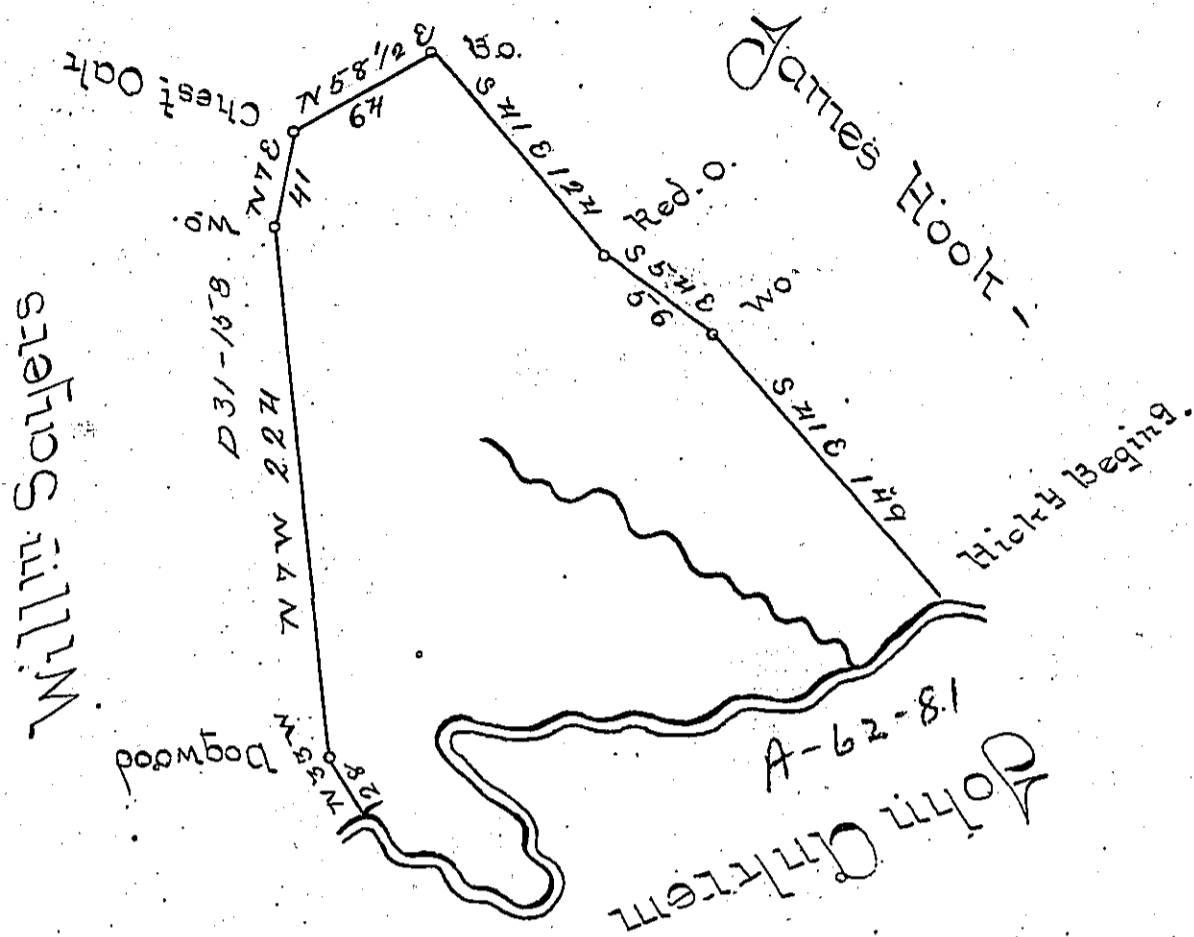
S 84 W 162.

S 32 E 50

S 75 W 18

N 60 W 66

384 25



The above is a Draught of a Survey Made January 15th 1796
 in pursuance of a Warrant Granted to Richard Morris Dated
 February 10th 1794 Situated on the South fork of Ten Mile
 Creek in the County of Washington Containing 500 Acres
 and the All^e of six per Cent
 Called Horse Head -

Jno Hoge D.S.

Donl Brodhead Esq S.G.

IN TESTIMONY that the above is a copy of the original remaining on file in
 the Department of Internal Affairs of Pennsylvania, made
 conformably to an Act of Assembly approved the 16th day of
 February, 1833, I have hereunto set my Hand and caused
 the Seal of said Department to be affixed at Harrisburg,
 this - seventh - day of - August - 1900 -



James W. Latta
 Secretary of Internal Affairs.